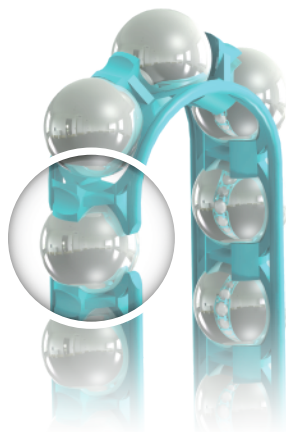
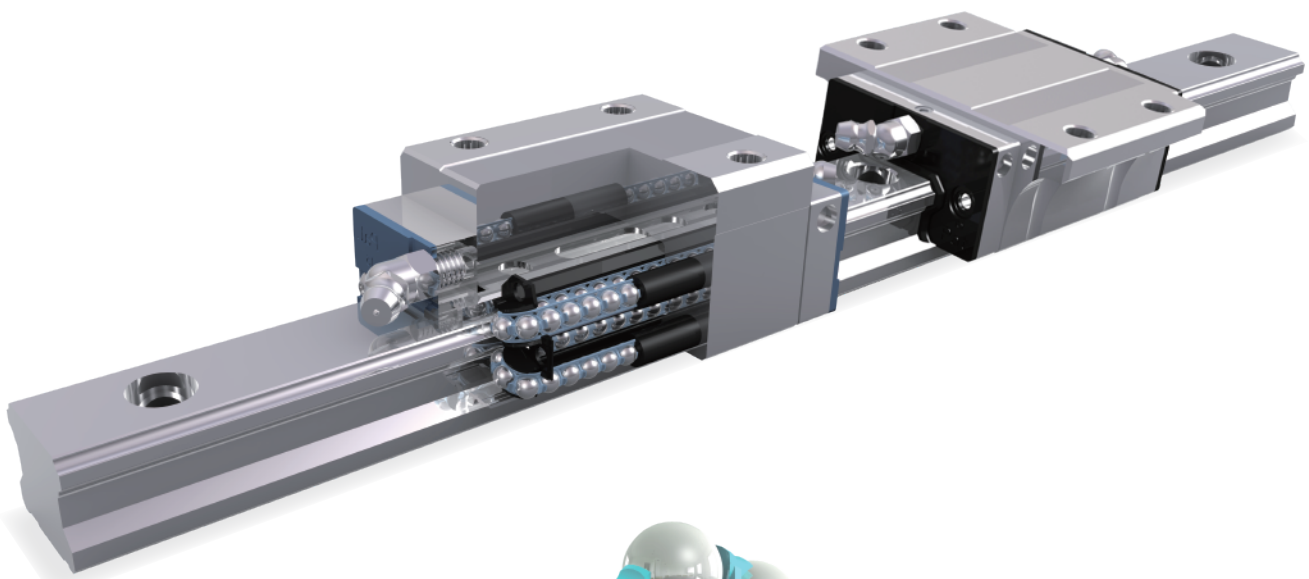




# STAF Linear Guide

*General Catalog*

*One Profile For All.*



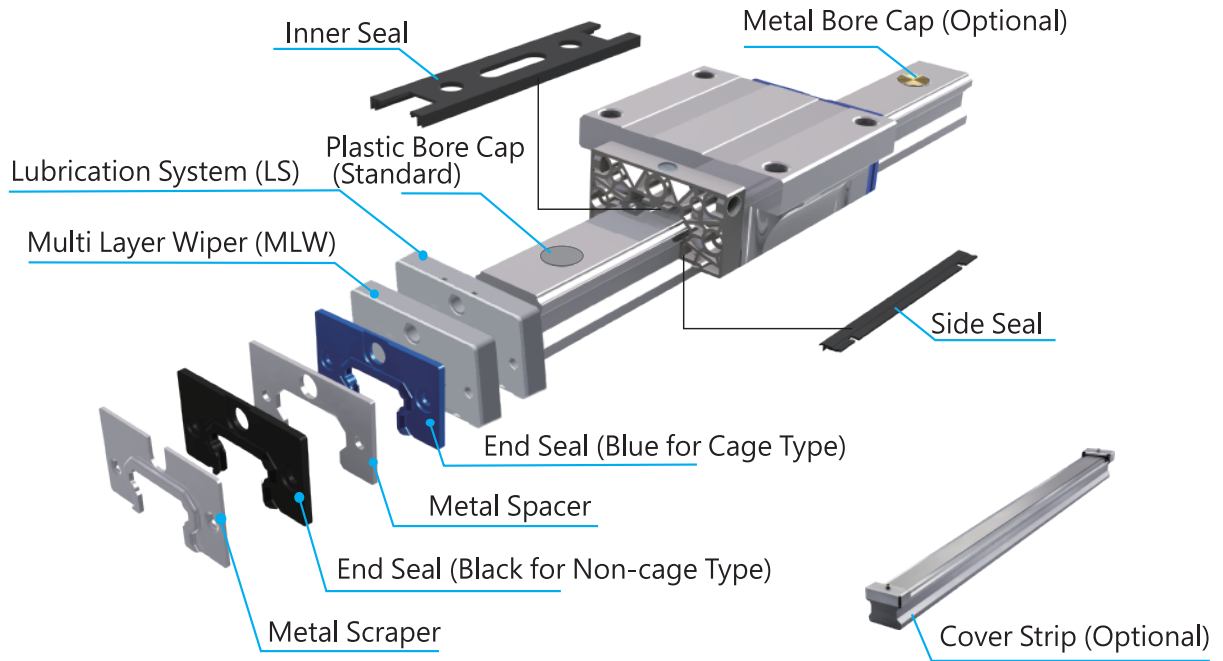
High Accuracy  
Low Noise  
Smooth Running







# Dustproof Accessories



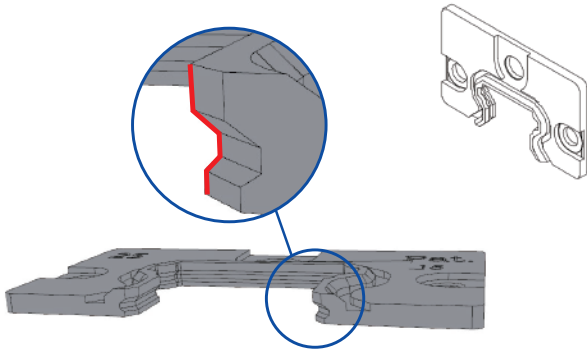
## Seal Combination

Standard End Seal Combination		Low Friction End Seals (LFS) Combination		Reinforced Side Seals (RSS) Combination		Lubrication System (LS)		Additional	
Code	Content	Code	Content	Code	Content	Code	Content	Code	Content
--	End Seal +Side Seal	AL	LFS +Side Seal	AB	End Seal +RSS	A	Self-Lubrication	M	Multiple-Layer Wiper
UU	End Seal	UL	LFS						
SS	End Seal +Side Seal +Inner Seal	SL	LFS +Side Seal +Inner Seal	SB	End Seal +RSS +Inner Seal				
DD	Double End Seal +Side Seal	DL	Double LFS +Side Seal	DB	Double End Seal +RSS				
EE	Double End Seal +Side Seal +Inner Seal	EL	Double LFS +Side Seal +Inner Seal	EB	Double End Seal +RSS +Inner Seal				
FF	End Seal +Side Seal +Inner Seal +Metal Scraper	FL	LFS +Side Seal +Inner Seal +Metal Scraper	FB	End Seal +RSS +Inner Seal +Metal Scraper				
GG	Double End Seal +Side Seal +Inner Seal +Metal Scraper	GL	Double LFS +Side Seal +Inner Seal +Metal Scraper	GB	Double End Seal +RSS +Inner Seal +Metal Scraper				
ZZ	End Seal +Side Seal +Metal Scraper	ZL	LFS +Side Seal +Metal Scraper	ZB	End Seal +RSS +Metal Scraper				
KK	Double End Seal +Side Seal +Metal Scraper	KL	Double LFS +Side Seal +Metal Scraper	KB	Double End Seal +RSS +Metal Scraper				

## End Seals

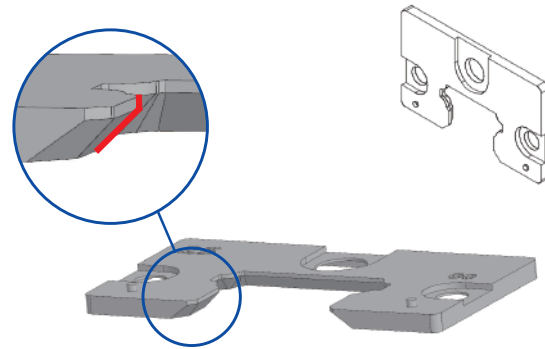
### Standard End Seal

Double-lipped design for an outstanding dust-proof performance.

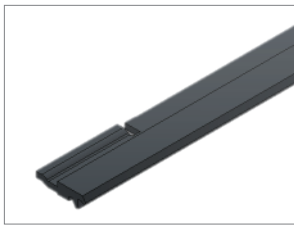


### Low Friction End Seal - LFS

Single-lipped design for lighter friction force while possesses good dust-proof performance.

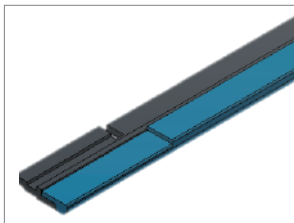


## Side Seals



### Standard Side Seal

Our standard side seal can prevent metal scraps, wood chips, dirt and so on from entering the carriage from bottom. Each STAF carriage is equipped with a pair as standard.



### Reinforced Side Seal - RSS

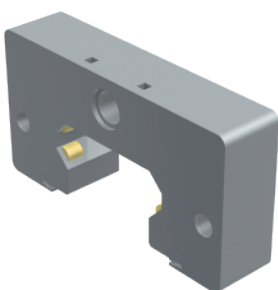
STAF reinforced side seal is composed of multiple materials. This optional side seal can reduce the risk of foreign matter intrusion even further than standard one.

## Multi-Layer Wiper (MLW)



STAF Multi-Layer Wiper is an additional seal option for our linear guide users. This accessory consists of three layers of high density sponge, and is an ideal seal option if thin and tiny particles are considered to be the major contamination in your working environment.

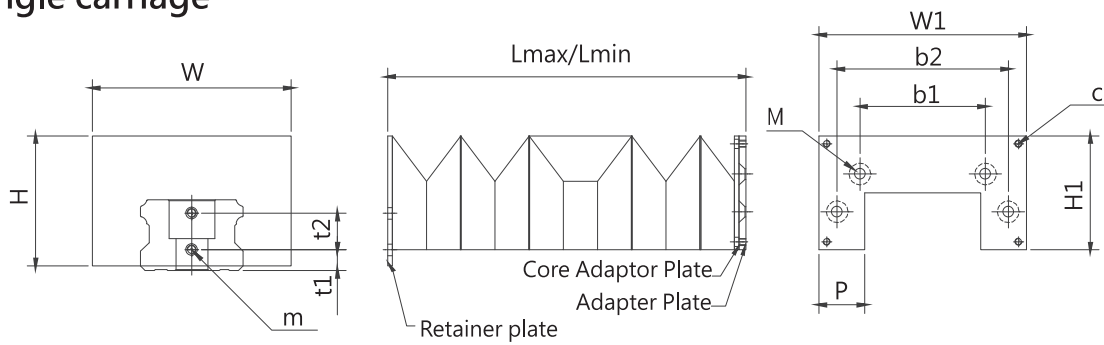
## Lubrication System (LS)



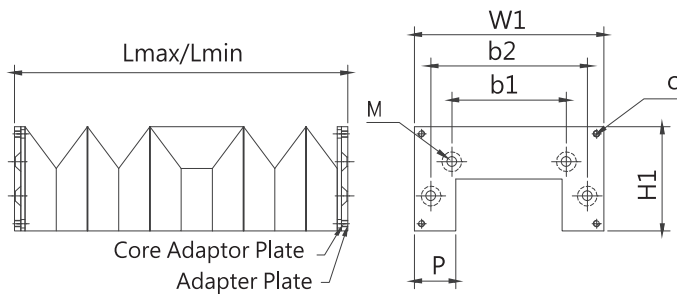
STAF Lubrication System continuously provides lubricant in appropriate amount onto the raceway. The amount of lubricant is controlled by capillary phenomenon, which would significantly extend the maintenance intervals and is Eco-friendly as surplus lubricant can be absorbed back and reused.

# Bellow

## Single carriage



## Multiple carriages



L max: Max. Elongation Length  
 L min: Min. Compression Length  
 ST (Stroke) = Lmax – Lmin

# Dimensions

Unit :mm

Size	Adapter Plate Dimension(mm)									Screw Specification		
	W	H	W1	H1	P	b1	b2	t1	t2	(M)Flat Head Screws	m	c
15	36	24	38	20.5	10	18.4	27	3	7.5	M2.5x12L	M3x6L	M3x5L
20	42	27.5	44	23	10	24.6	34.5	3.7	10	M3x12L	M3x6L	M3x5L
25	48	30	48	28	10	28	40.2	6	10	M3x14L	M3x6L	M3x5L
30	70	38	62	34	15	34	50.5	6.8	12	M3x16L	M4x8L	M3x5L
35	70	43	72	40	15	43	60	9	12	M4x18L	M4x8L	M3x5L
45	87	57	91	50	20	55	75	9.1	16	M4x18L	M4x8L	M3x5L
55	100	60	104	55	20	64	88	15	16	M4x25L	M4x8L	M3x5L

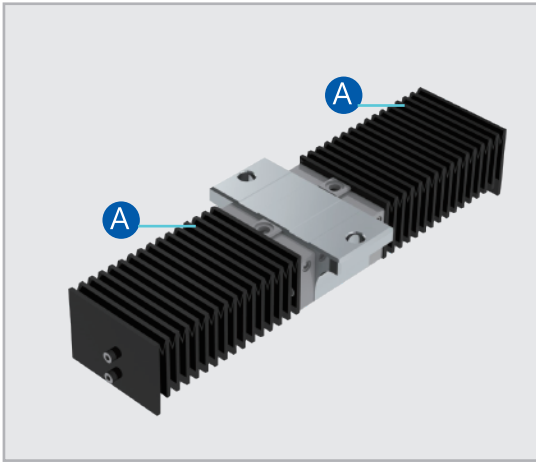
# Stroke Length

Unit :mm

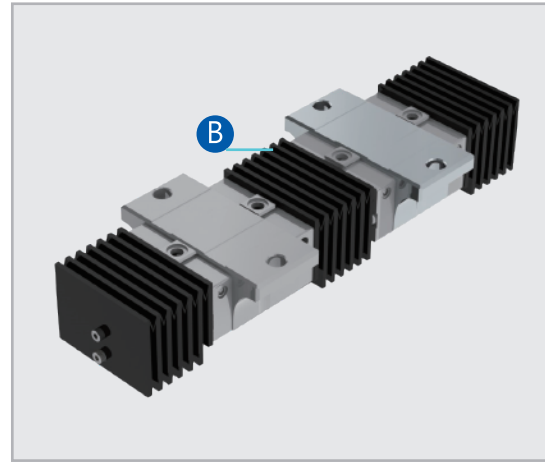
Lmax(mm)	500	800	1000	1200	1500
Lmin(mm)	160	235	285	335	410

© PLEASE CONTACT OME/ STAF FOR MORE INFORMATION.

Single carriage



Multiple carriages



## Product Codes

BGC

15

A

01000

00285

Carriage type  
**BGX:** Non-caged  
**BGC:** Caged

Size: **15, 20, 25, 30, 35, 45, 55**

Locking Method:  
**A:** Single carriage **B:** Multiple carriages

L max

L min

# Product Codes

**BGC H 25 BN - 2 - UUAM - L 1500 - P - Z1 - II R 1**

Carriage type

**BGX:** Non-caged  
**BGC:** Caged

Assembly height

**H:** High assembly  
**S:** Low assembly  
**X:** Special assembly

Size: **15, 20, 25, 30, 35, 45, 55**

Carriage design

**B:** Block (Squared), **F:** Flange

Carriage length

**S:** Short, **N:** Standard, **L:** Long  
**E:** Extra-long

Number of carriages

Seal combination (reference to the seal combination table)

Rail mounting type

**L:** Counterbored holes (standard)  
**C:** Bottom tapped holes  
**J:** Jointed rails (counterbored holes)  
**D:** Jointed rails (bottom tapped holes)  
**X:** Customized

Rail length (mm)

Precision grades

**N:** Normal, **H:** High, **P:** Precise, **SP:** Super Precise, **UP:** Ultra Precise

Preload

**ZF:** With clearance, **Z0:** No preload  
**Z1:** Light preload, **Z2:** Medium preload, **Z3:** Heavy preload

Number of parallel rails

Surface treatment (unavailable for precision grades SP/UP)

Leave blank if surface treatment isn't required

**D:** Trivalent chromium, **R:** Fluoride chromium, **K:** Black chromium  
**N:** Nickel, **B:** Black oxide, **P:** Phosphate

Treated parts

**1:** Rail only  
**2:** Carriage only  
**3:** Rail and carriage